

16mm Probe II Plus



Tubular Lens System for Superior Quality Film & Video Work.

Innovision Optics has been providing tubular optics to the video and film industry since 1987. The initial lenses were developed from endoscopic technology and included fiber optics to light the way. Innovision pioneered the original Probe Lens which brought a new dimension to table top shooting. The Probe II offered higher resolution and faster speed than Probe I.

Now, Innovision introduces the Probe II Plus, manufactured by Century Precision Optics, and developed especially for shooters whose projects require the highest resolution images.

The Probe II Plus's barrel lets the camera roam over, under, around or even through objects, unleashing a novel range of tabletop shooting possibilities. Probe II Plus offers direct view and 90 degree viewing options.

The Probe II Plus features high resolution glass elements and relay optics for images with remarkable edge-to-edge sharpness, and extreme depth of field. State-of-the-art multiple coatings provide sharp low dispersion images.

The Video/16mm Probe II easily covers all video formats, 16mm and Super 16 format as well. The Probe II Plus comes in 35mm film and Video/16mm versions.

Probe II Plus lenses, rated at T4, come with a set of five interchangeable front objectives ranging from 5-24mm focal lengths. All Probe II Plus lenses are waterproof.

Interchangeable lens mounts offer simple adaptation to most professional video and 16mm cameras.

For hands-off focus, Innovision offers an optional remote follow focus.

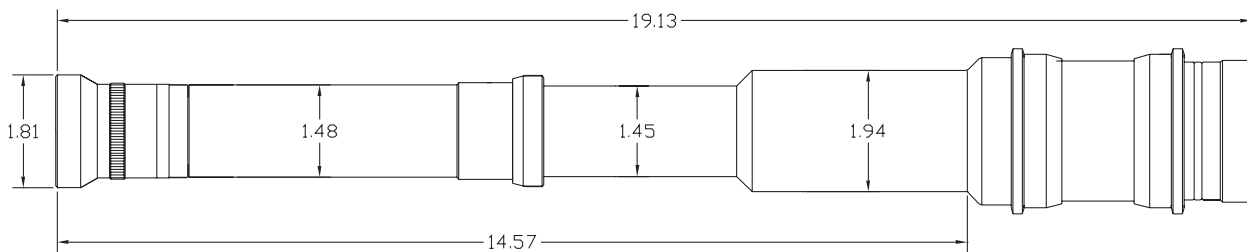
innovision[®]
OPTICS

1719 21st Street Santa Monica
California 90404 USA
Telephone: 310-453-4866
www.innovisionoptics.com

16mm Probe II Plus

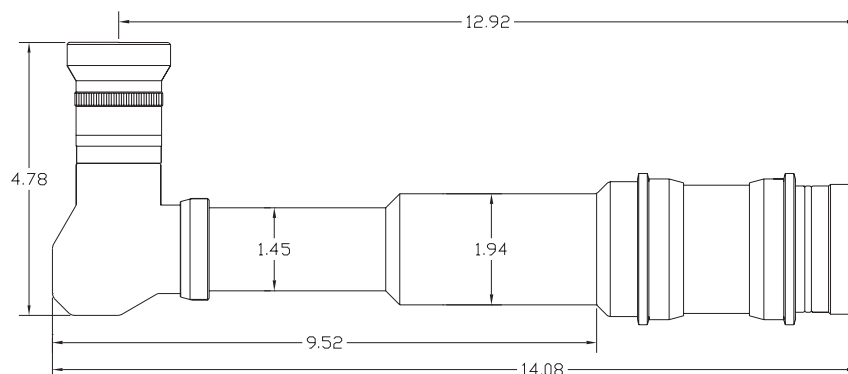
Video/16mm Probe II Plus System Specs

Speed:	T4-T22
Barrel Diameter:	1.7"(43mm)
Objective Lenses:	5mm, 7mm, 9.5mm, 12.5mm, 18mm and 24mm
Focusing Ring:	72 teeth, 0.8 module
Optional Accessories:	Remote focus control, lens mounts, shipping cases



Video/16mm Probe II Plus in Direct View

Weight:	4.9lbs (2kg)
Length:	19" (48cm)
Waterproof to:	14" (36cm)Deep



Video/16mm Probe II Plus in 90 Degree View

Weight:	4.9lbs (2kg)
Length:	14" (35cm)
Waterproof to:	9" (23cm)Deep

innovision
OPTICS

1719 21st Street Santa Monica
California 90404 USA
Telephone: 310-453-4866
www.innovisionoptics.com